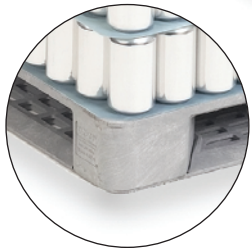




44 x 56 OCP, Divider Sheets and Top Frame



NEW flush pallet corner design reduces damage. When adjacent pallets are loaded or stacked, 90° pallet corners fit tightly next to each other, with no extra movement that can cause bottle or can damage.



Plastic reusable packaging improves the flow of product all along the supply chain, to reduce total costs. ORBIS uses proven expertise, industry-leading knowledge and superior products to create reusable packaging systems that help world-class companies move their products faster, better, safer and more cost effectively. [Call ORBIS today to learn more.](http://www.orbiscorporation.com)

With over 20 years of industry experience, ORBIS proudly introduces the 44" x 56" OCP, a pallet optimally designed for conveying a wide variety of PET and metal containers. Advanced tooling and design has allowed the OCP to achieve an unparalleled strength-to-weight ratio, while driving cost out of the supply chain for our customers through reduced product damage, optimized transportation and improved warehouse space and automation utilization.

The 44" x 56" OCP is a lightweight, yet durable and impact resistant pallet to protect and transport product. The OCP was developed specifically for PET and metal containers; especially containers used for food, beverage, household chemical, industrial, health and personal care products.

To fully support today's automated distribution systems, the dimensionally consistent 44 x 56 OCP is compatible with many palletizers, depalletizers, automatic strapping/banding systems and conveyors, as well as the market's existing pallet offerings.

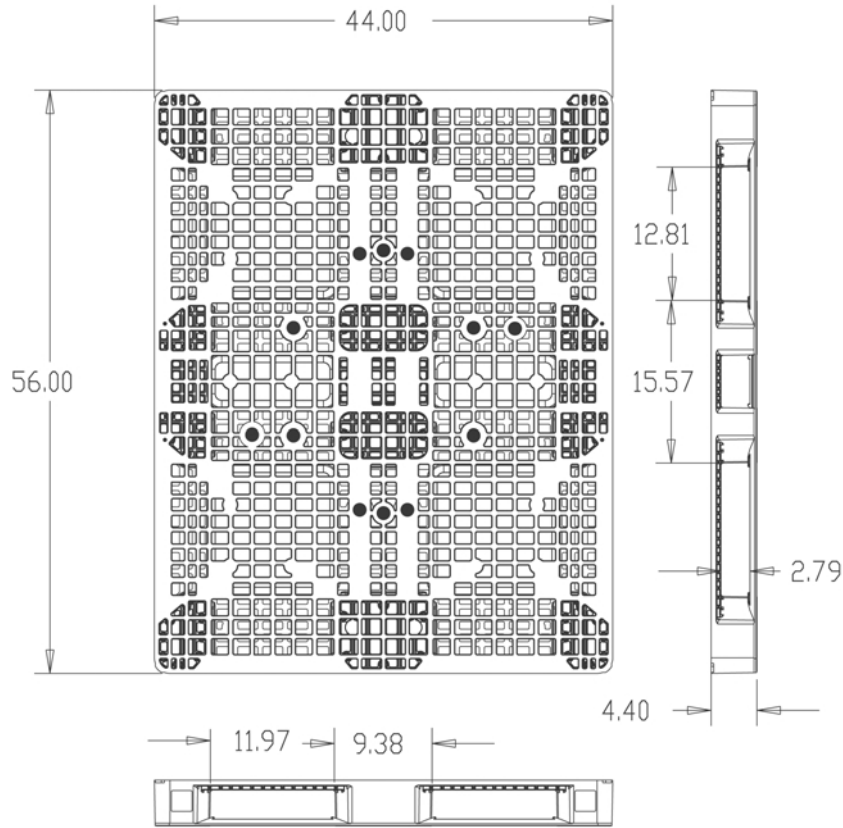
The OCP features a flow through rib design for high cleanability and is compatible with various pallet washing systems. The OCP includes a reinforced, beveled underside deck to aid in reduction of banding tension against the pallet edge, creating less breakage.

Available in FDA approved material and fully recyclable at the end of its service life.

ORBIS top frames and divider sheets are also available for additional load stability and product protection.



# 44 x 56 Container Pallet



Model	Dimensions			Weight (lb.)	Load Capacity (lb.)		Truckload Quantity 53' Trailer
	L	W	H		Static	Dynamic	
44 x 56 OCP	56.0	44.0	4.4	43.0	30,000	4,000	528 / 575*

\* Indicates number of pallets pinwheel loaded in a 53' trailer.

- ▶ Consistent weight and size for accurate transportation costs
- ▶ Environmentally friendly and 100% recyclable
- ▶ Smooth, all plastic construction reduces product damage (no exposed nails, rust, splinters or broken boards)
- ▶ Reduces packaging waste by eliminating wood pallet disposal
- ▶ Improves workplace safety with smooth design and stable stackability

**Design:**  
Stackable  
Open deck

**Material:**  
High-density Polyethylene  
Available in FDA approved material

**Options:**  
Hot stamp  
Molded-in logo  
Grommets  
9-legged configuration



Hand-Held Containers   Bulk Containers   Pallets   Custom Interior Dunnage   World-Class Services



1055 Corporate Center Drive ■ Oconomowoc, WI 53066 USA  
International: 262-560-5000 ■ Fax: 262-560-5841 ■ Toll Free: 800-999-8683  
[www.orbiscorporation.com](http://www.orbiscorporation.com)



ORBIS® Corporation is a subsidiary of Menasha Corporation.

44x56 OCP 0707 0-4078