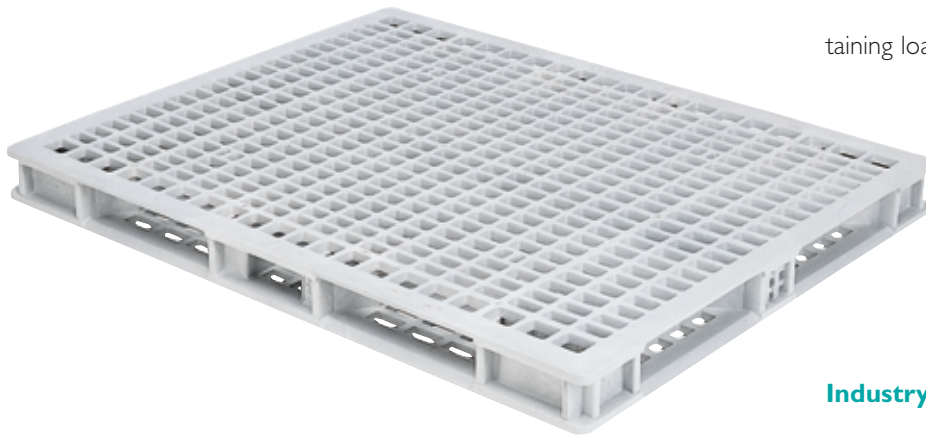




# 44 x 56 Structo-Cell® Pallet

The toughest, longest-lasting can pallet in the industry.

The Structo-Cell® Pallet is the ultimate in durability. Structural foam-molded one-piece, two-face construction stands up to tough can and beverage industry use. The 12-leg design gives load-handling flexibility plus stability. It provides superior hygiene; the tough outer surface will not retain dirt and is easy to clean. The Structo-Cell Pallet is compatible with automated equipment and is available with a rigid top frame for securing and maintaining load stability.

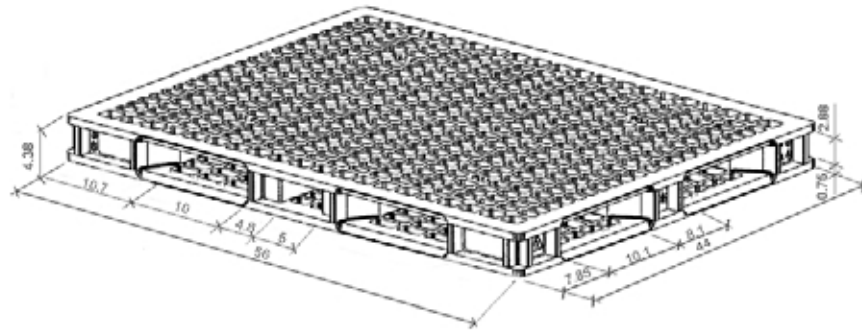


#### Industry Applications:

- ▶ Food processing
- ▶ Beverage
- ▶ Automotive
- ▶ Warehousing
- ▶ General industry

**Additional  
Footprints:**  
44" x 60"

# 44 x 56 Structo-Cell® Pallet



Model	Dimensions			Weight (lb.)	Fork Truck Entry	Hand Truck Entry	Load Capacity (lb.)		Truckload Quantity	
	L	W	H				Static	Dynamic	48' Trailer	53' Trailer
44 x 56 HD	44.0	56.0	4.38	56.0	4 way	4 way	30,000	4,000	480	528
44 x 60 HD	44.0	60.0	4.38	58.0	4 way	4 way	30,000	4,000	414	460

- Consistent weight for accurate transportation costs
- Environmentally friendly and 100% recyclable
- Smooth, all plastic construction protects product (no nails, rust or splinters)
- Reduces packaging waste by eliminating wood pallet disposal
- Improves workplace safety with smooth design and stable stackability
- Rapid economic payback
- Resistance to common chemicals, insects and water

## Design:

- Manufactured in High Density Polyethylene (HDPE)
- One-piece construction
- Structural foam injection molded for strength, durability, close tolerance, dimensional consistency and stability
- Tapered 4-way entry for easy targeting
- Full bottom deck
- Fork tine openings: Beveled deck and base tapering to 2.875" or 71mm
- Tolerances: +/- .25" or 3mm
- Flatness: .2" or 5mm

## Options:

- Molded-in logo
- Hot stamp
- Grommets
- Polypropylene
- Custom colors

Performance characteristics vary with application.

Hand-Held Containers   Bulk Containers   Pallets   Custom Interior Dunnage   World-Class Services

## ORBIS Corporation

1055 Corporate Center Drive   Oconomowoc, WI 53066   USA  
 Phone: 262-560-5000   Fax: 262-560-5841   Toll Free: 800-999-8683

[www.orbiscorporation.com](http://www.orbiscorporation.com)



ORBIS® Corporation is a subsidiary of Menasha Corporation.

44x56 Duro/1202 0-5011

